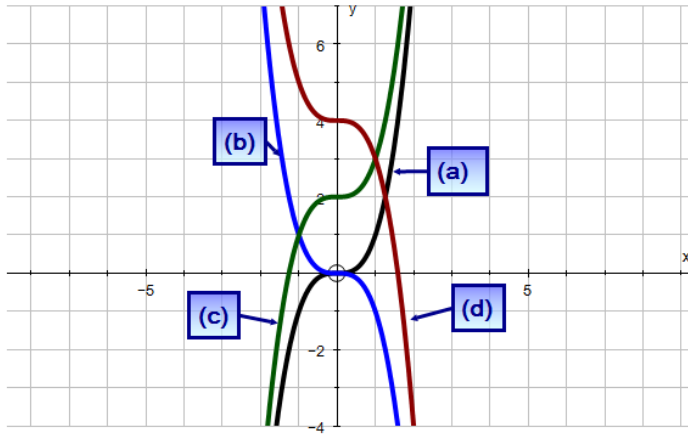
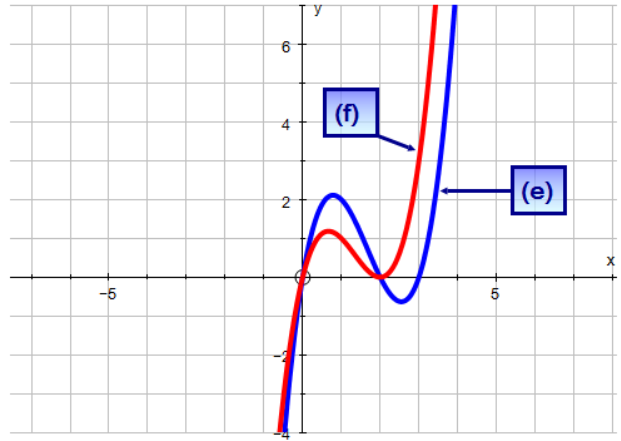


# Answers to Year 12 C1 Sketching Cubics and Reciprocal Functions

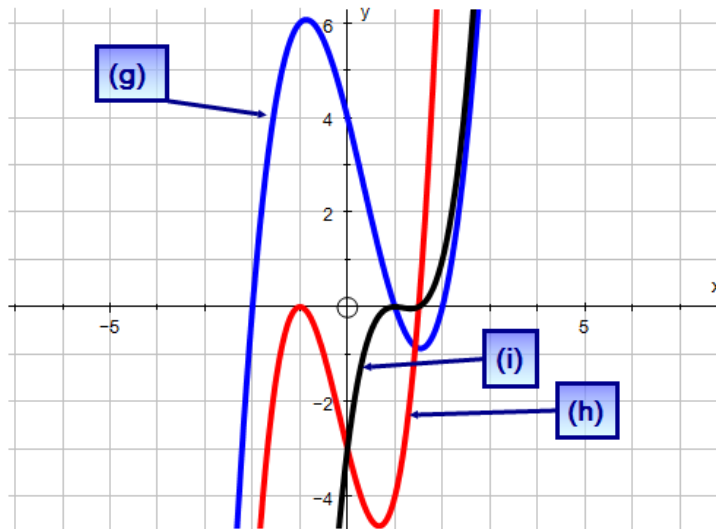
1. (a), (b), (c) and (d) on one graph to save paper.



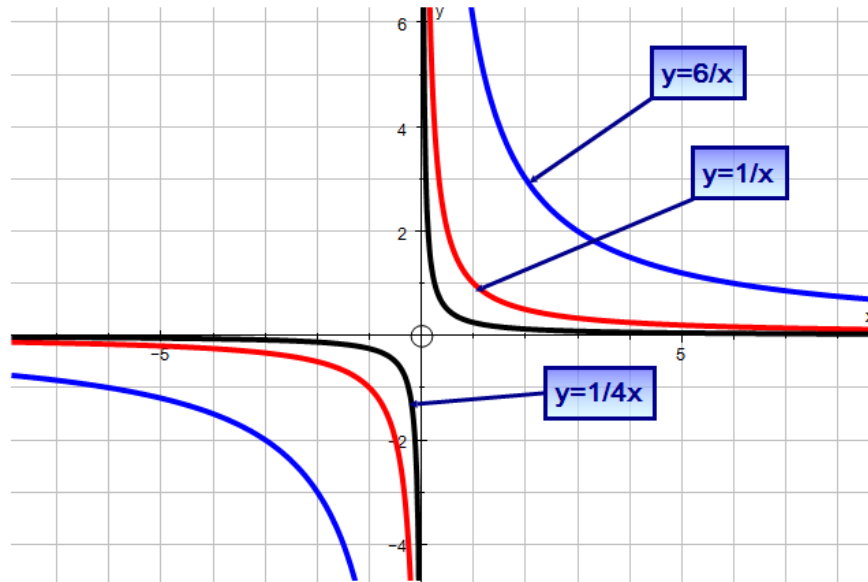
(e), (f) on one graph.



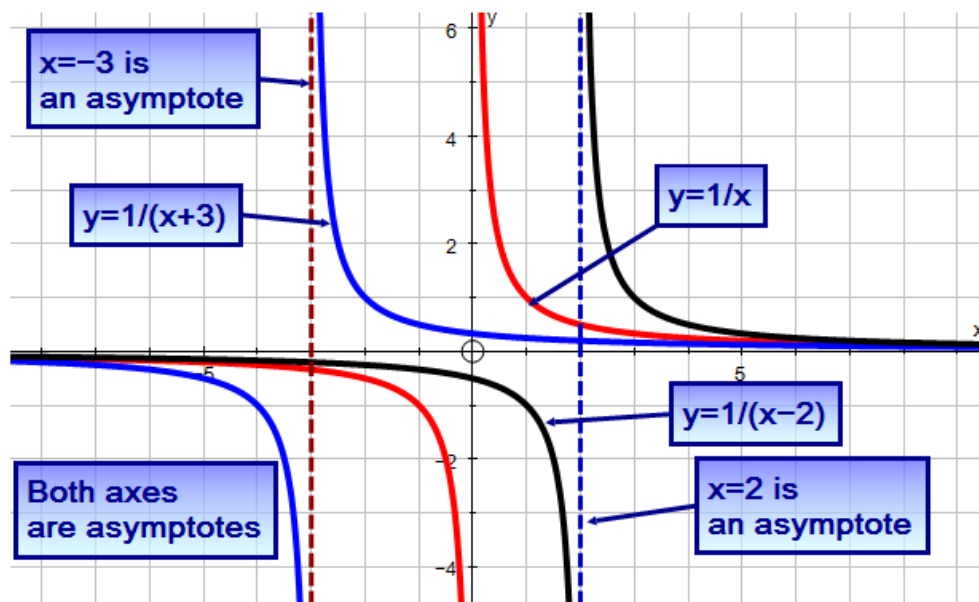
(g), (h) and (i) on one graph.



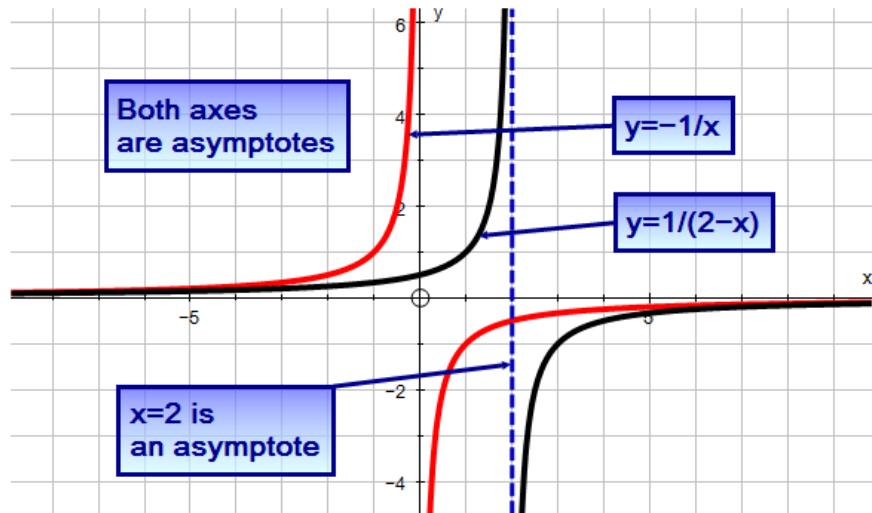
2. (a) and (b) on one graph. Note: none intersect the axes.  
 Note: Both axes are asymptotes.



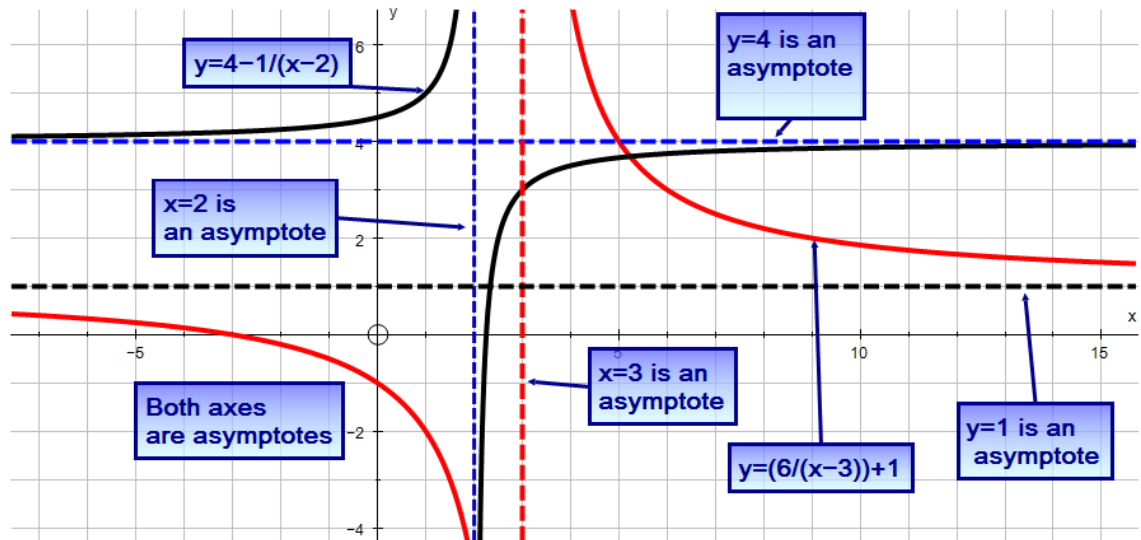
(c) and (d) together.



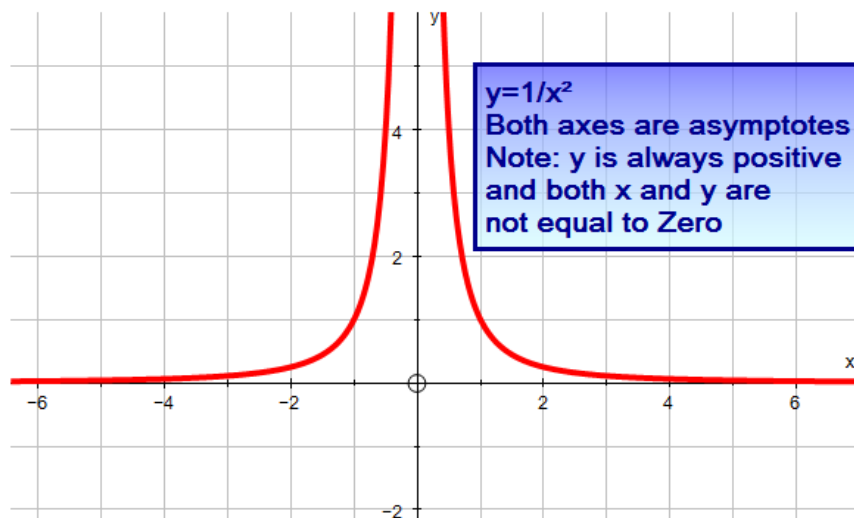
2. Continued: (e)



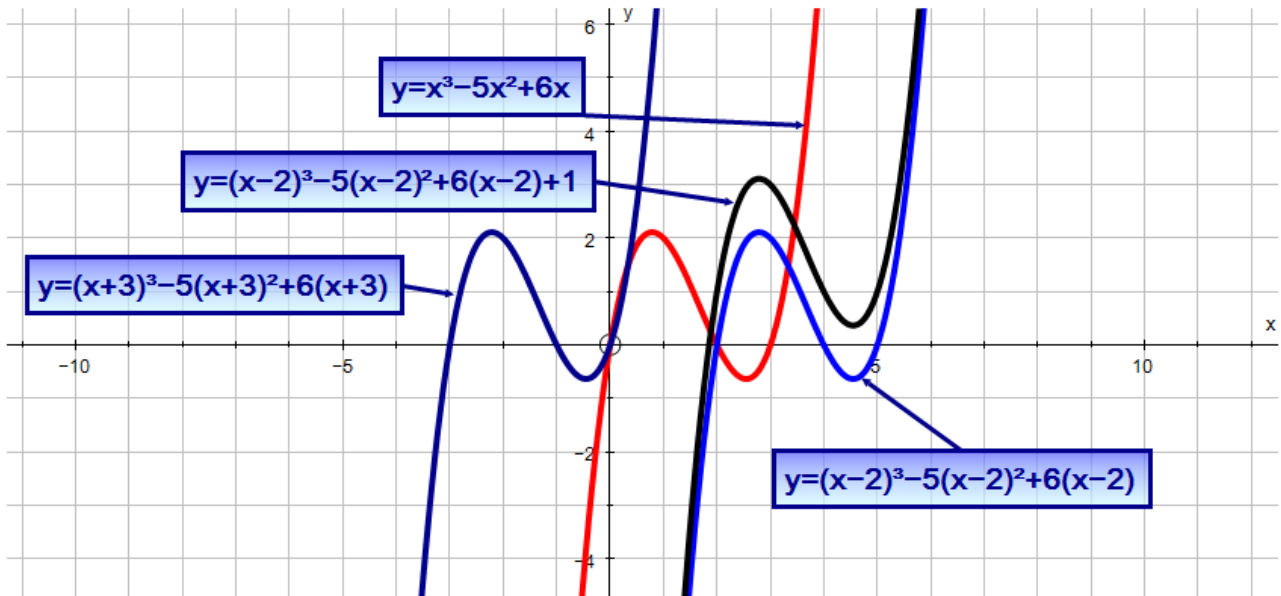
(f)



(h)



3. (a), (b), (c)



(d)



If you find any errors, please let me know. Thank you.