

# Imperial $\longleftrightarrow$ Metric

**Inch**

**Foot**

**Yard**

**Gallon**

**Pint**

**Pound**

**Millimetre**

**Centimetre**

**Metre**

**Kilometre**

**Litre**

**Kilogram**



## Approximate ( $\approx$ ) Conversions

$$1 \text{ inch} \approx 2.54 \text{ cm}$$

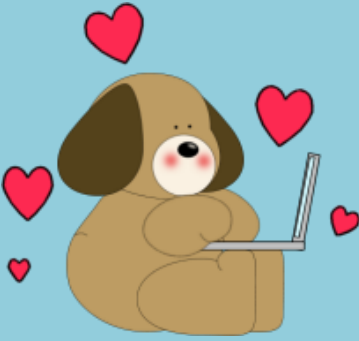
$$1 \text{ gallon} \approx 4\frac{1}{2} \text{ (4.5) litres}$$

$$1 \text{ mile} \approx \frac{8}{5} \text{ (1.6) km}$$

$$1 \text{ km} \approx \frac{5}{8} \text{ (0.625) miles}$$

$$5 \text{ miles} \approx 8 \text{ km}$$





**1 kg  $\approx$  2.2 lbs (pounds)**

**1 litre  $\approx$   $1\frac{3}{4}$  (1.75) pints**

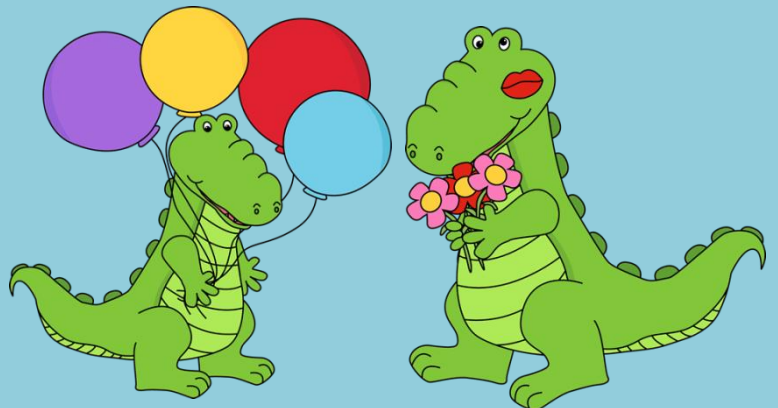
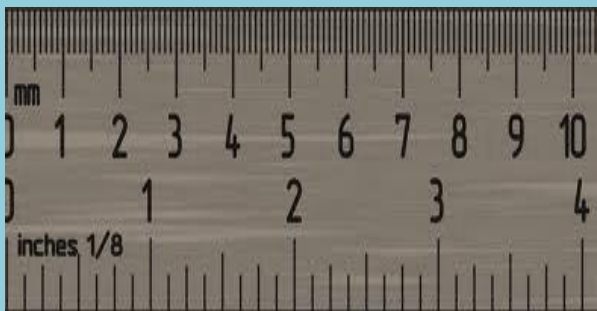
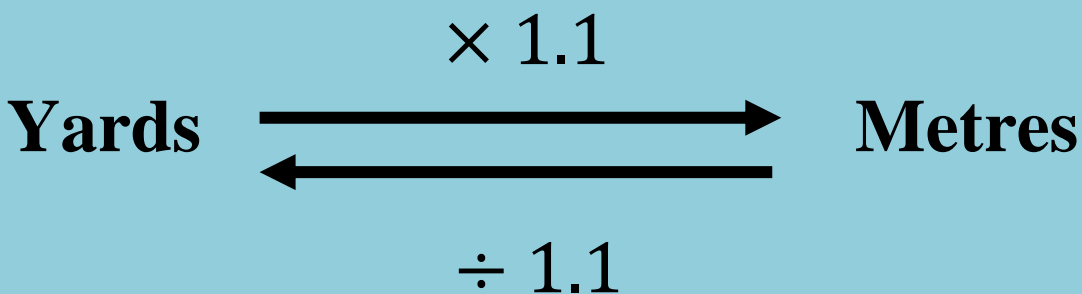
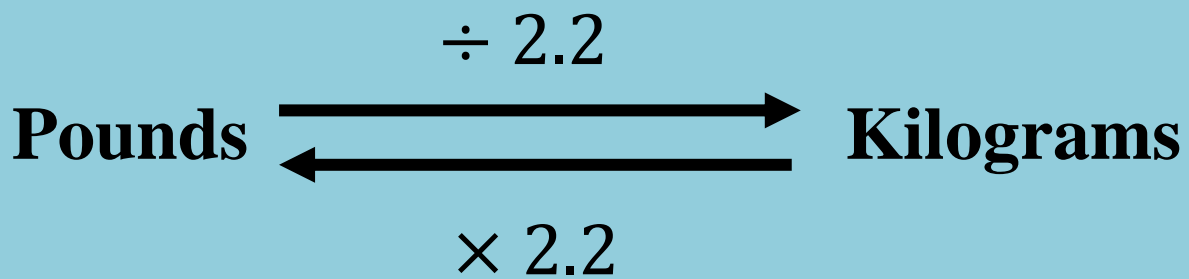
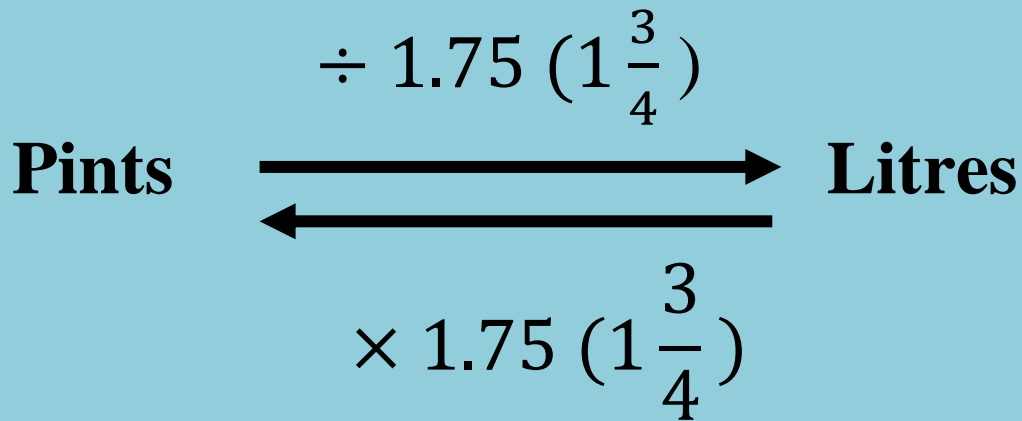
**1 metre  $\approx$  1.1 yards  $\approx$  3.3 feet**

**30 cm  $\approx$  1 foot**

**Inches**  $\xrightarrow{\times 2.54}$  **Centimetres**  
 $\xleftarrow{\div 2.54}$

**Gallons**  $\xrightarrow{\times 4.5}$  **Litres**  
 $\xleftarrow{\div 4.5}$

**Miles**  $\xrightarrow{\div 0.625 \left(\frac{5}{8}\right)}$  **Kilometres**  
 $\xleftarrow{\times 0.625 \left(\frac{5}{8}\right)}$



## Calculate the missing number.

1.	80 km	$\approx$	_____	miles
2.	250 miles	$\approx$	_____	km
3.	20 kg	$\approx$	_____	lbs
4.	132 lbs	$\approx$	_____	kg
5.	10 yards	$\approx$	_____	metres
6.	10 gallons	$\approx$	_____	litres
7.	10 litres	$\approx$	_____	pints
8.	10 inches	$\approx$	_____	cm
9.	120cm	$\approx$	_____	feet
10.	1000 miles	$\approx$	_____	km

11. When I arrived at the airport to check in, the lady at the counter said that my luggage weighed 42 lbs (pounds).

My luggage allowance is 20kg.

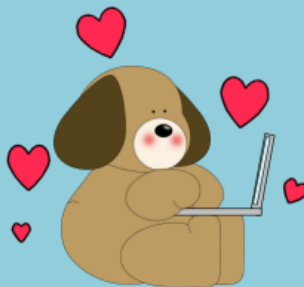
Will I have to pay for excess luggage? \_\_\_\_\_



# KEY

My name is Unit Conversion!		
1.	80 km	≈ 50 miles
2.	250 miles	≈ 400 km
3.	20 kg	≈ 44 lbs
4.	132 lbs	≈ 60 kg
5.	10 yards	≈ 11 metres
6.	10 gallons	≈ 45 litres
7.	10 litres	≈ 17.5 pints
8.	10 inches	≈ 25.4 cm
9.	120cm	≈ 4 feet
10.	1000 miles	≈ 1600 km

11. No.  $42 \div 2.2 = 19.09 \approx 19\text{kg}$ .



Please check answers. Thank you.